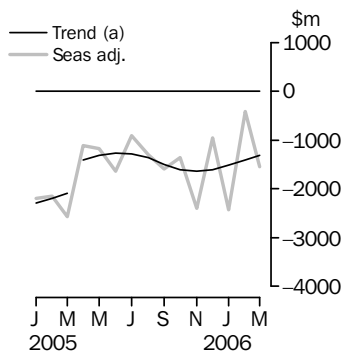


INTERNATIONAL TRADE IN GOODS AND SERVICES

AUSTRALIA

EMBARGO: 11.30AM (CANBERRA TIME) FRI 5 MAY 2006

Balance on goods and services



(a) A trend break of \$600m has been applied to April 2005.

KEY FIGURES

	January 2006 \$m	February 2006 \$m	March 2006 \$m	Feb 06 to Mar 06 % change
TREND				
Balance on goods & services	-1 512	-1 411	-1 307	..
Credits (exports of goods & services)	16 060	16 273	16 434	1
Debits (imports of goods & services)	17 572	17 684	17 741	-
SEASONALLY ADJUSTED				
Balance on goods & services	-2 422	-415	-1 545	..
Credits (exports of goods & services)	15 372	16 958	16 072	-5
Debits (imports of goods & services)	17 794	17 373	17 617	1

.. not applicable

— nil or rounded to zero (including null cells)

KEY POINTS

TREND ESTIMATES

- The provisional trend estimate of the balance on goods and services was a deficit of \$1,307m in March 2006, a decrease of \$104m on the revised deficit in February.
- Goods and services credits rose \$161m (1%) to \$16,434m. Goods and services debits rose \$57m to \$17,741m.

SEASONALLY ADJUSTED ESTIMATES

- In seasonally adjusted terms, the balance on goods and services was a deficit of \$1,545m in March, an increase of \$1,130m on the revised deficit in February.
- Goods and services credits fell \$886m (5%) to \$16,072m. Non-rural and other goods fell \$1,009m (9%) while rural goods rose \$153m (7%). Services credits fell \$30m (1%).
- Goods and services debits rose \$244m (1%) to \$17,617m. Capital goods rose \$410m (13%), consumption goods rose \$46m (1%), while intermediate and other goods fell \$176m (3%). Services debits fell \$36m (1%).

ORIGINAL ESTIMATES

- In original terms, the March balance on goods and services was a deficit of \$1,158m, a turnaround of \$1,165m on the revised surplus of \$7m in February. Goods and services credits rose \$931m (6%) and goods and services debits rose \$2,096m (13%).
- In the nine months to March, exports of non-rural and other goods were up \$19.9b (27%) while rural goods were down \$0.6b (3%) on the corresponding period in 2004–05.

INQUIRIES

For further information about these and related statistics, contact the National Information and Referral Service on 1300 135 070 or Tom Jebbink on Canberra (02) 6252 5540.

NOTES

FORTHCOMING ISSUES

ISSUE	RELEASE DATE
April 2006	31 May 2006
May 2006	14 July 2006
June 2006	11 August 2006
July 2006	8 September 2006
August 2006	4 October 2006
September 2006	2 November 2006

DELAYS TO UPCOMING PUBLICATIONS

The ABS is implementing a new system for processing merchandise trade data. The release of merchandise trade imports and exports will be delayed to allow additional quality assurance to be undertaken during the implementation of the new system.

The new system will be implemented in September quarter 2006.

As merchandise trade statistics and trade in goods on a balance of payments basis are presented in this publication, the ABS has delayed the release of upcoming issues for May 2006 through to July 2006. If additional small delays are required for subsequent issues, they will be advised in future releases of this publication.

The table below provides the previously advertised and new release dates for this publication.

Issue	Previous release date	New release date
May 2006	4 July 2006	14 July 2006
June 2006	2 August 2006	11 August 2006
July 2006	31 August 2006	8 September 2006

REVISIONS

Revisions were made to incorporate the latest available data relating to merchandise trade and trade in services. In original terms, these revisions have:

- decreased the deficit on goods and services for February 2006 by \$112m resulting in a surplus of \$7m
- decreased the deficit for the eight months to February 2006 by \$71m.

UPDATED TIME SERIES

Updated data cubes on Australia's international trade in services by partner country and international trade in services by state for the calendar year 2005 and for the financial year 2004–05 will be released with this issue. They can be accessed on the ABS web site www.abs.gov.au via catalogue numbers 5368.0.55.004 and 5368.0.55.003 respectively. The data cubes have been allocated separate catalogue numbers to assist clients in locating them on the web site.

FEATURE ARTICLE

A feature article addressing the methodology for compiling counts of the number of exporters was released on 7 April 2006. The article can be accessed on the ABS web site www.abs.gov.au from the summary page of the February 2006 issue of this publication.

Dennis Trewin
Australian Statistician

CONTENTS

page

Time series data	4
----------------------------	---

ANALYSIS

Analysis and comments	5
---------------------------------	---

TABLES

INTERNATIONAL TRADE IN GOODS AND SERVICES – BALANCE OF PAYMENTS BASIS

1 Goods and services, summary, seasonally adjusted and trend estimates	10
2 Goods and services, summary, original	11
3 Goods credits, original	12
4 Goods debits, original	13
5 Goods credits, seasonally adjusted	14
6 Goods debits, seasonally adjusted	15
7 Goods credits, trend estimates	16
8 Goods debits, trend estimates	17
9 Services, summary, original	18
10 Services, summary, seasonally adjusted and trend estimates	19
11 Services, original, quarterly	20

INTERNATIONAL MERCHANDISE TRADE – RECORDED TRADE BASIS

12 International merchandise exports, by commodity	21
13 International merchandise imports, by commodity	24
14 International merchandise trade, by country and country groups	27
15 International merchandise trade, by state	28

OTHER TABLES

16 Period average exchange rates per Australian dollar	29
---	----

OTHER INFORMATION

Explanatory Notes	30
Appendix – Related articles	33

TIME SERIES DATA

TIME SERIES DATA

Data available free on the ABS web site <<http://www.abs.gov.au>> include:

- longer time series of all tables contained in this publication
- additional spreadsheets and data cubes listed below:

31 Merchandise exports by Broad Economic Category (BEC)

32 Merchandise exports by industry of origin (ANZSIC)

33 Merchandise imports by Broad Economic Category (BEC)

34 Merchandise imports by Balance of Payments Broad Economic Category (BoPBEC)

35 Merchandise imports by industry of origin (ANZSIC)

36 Merchandise exports, state by country and country groups

37 Merchandise imports, state by country and country groups

90 Monthly forward seasonal adjustment factors

Trade in Services data cubes are usually updated on an annual basis - with the March issue of 5368.0 for calendar year and with the September issue for financial year.

Financial year (cat. no. 5368.0.55.003)

1 International trade in services, credits, state by financial year

2 International trade in services, credits, financial year by state

3 International trade in services, debits, state by financial year

4 International trade in services, debits, financial year by state

5 International trade in services, credits, financial year by country and service

6 International trade in services, credits, service by financial year and by country

7 International trade in services, debits, financial year by country and service

8 International trade in services, debits, service by financial year and by country

9 International trade in services, financial year by detailed service

Calendar year (cat. no. 5368.0.55.004)

1 International trade in services, credits, state by calendar year

2 International trade in services, credits, calendar year by state

3 International trade in services, debits, state by calendar year

4 International trade in services, debits, calendar year by state

5 International trade in services, credits, calendar year by country and service

6 International trade in services, credits, service by calendar year and by country

7 International trade in services, debits, calendar year by country and service

8 International trade in services, debits, service by calendar year and by country

9 International trade in services, calendar year by detailed service

ANALYSIS AND COMMENTS

BALANCE ON GOODS AND SERVICES

The trend estimate of the balance on goods and services in March 2006 was a deficit of \$1,307m, a decrease of \$104m on the deficit in February.

In seasonally adjusted terms, the balance on goods and services in March 2006 was a deficit of \$1,545m, an increase of \$1,130m on the deficit in February.

The sum of the seasonally adjusted balances for the three months to March 2006 was a deficit of \$4,382m, a decrease of \$325m on the deficit of \$4,707m for the three months to December 2005. However, if the seasonal factors used in compiling quarterly Balance of Payments are applied, the preliminary March quarter 2006 deficit was \$4,676m, an increase of \$502m on the revised December quarter 2005 deficit of \$4,174m.

EXPORTS OF GOODS AND SERVICES

The trend estimate of goods and services credits rose \$161m (1%) between February and March to \$16,434m.

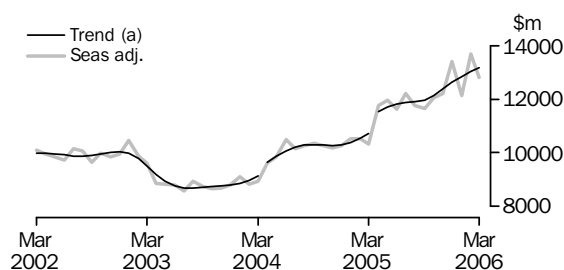
In seasonally adjusted terms, goods and services credits fell \$886m (5%) to \$16,072m.

Non-rural and other goods fell \$1,009m (9%) while rural goods rose \$153m (7%).

Services credits fell \$30m (1%).

Exports of goods

GOODS CREDITS



(a) Trend breaks of \$300m have been applied to April 2004 and \$600m to April 2005.

RURAL GOODS

The trend estimate of rural goods exports rose \$35m (2%) to \$2,194m.

In seasonally adjusted terms, exports of rural goods rose \$153m (7%) to \$2,260m.

All seasonally adjusted components of rural goods contributed to the rise with:

- cereal grains and cereal preparations, up \$76m (18%)
- other rural, up \$35m (4%)
- wool and sheepskins, up \$26m (13%)
- meat and meat preparations, up \$16m (3%).

In original terms, exports of rural goods rose \$326m (16%) to \$2,339m.

ANALYSIS AND COMMENTS *continued*

Exports of goods continued

NON-RURAL GOODS

The trend estimate of non-rural goods exports rose \$60m (1%) to \$10,019m.

In seasonally adjusted terms, exports of non-rural goods fell \$940m (9%) to \$9,674m.

The main movements in the seasonally adjusted components contributing to the fall were:

- metal ores and minerals, down \$471m (18%)
- other mineral fuels, down \$398m (29%)
- metals (excluding non-monetary gold), down \$68m (7%)
- other non-rural, down \$42m (4%)
- other manufactures, down \$29m (2%).

Partly offsetting these effects were:

- coal, coke and briquettes, up \$48m (2%)
- transport equipment, up \$21m (5%).

Movements in the original series contributing to the fall in seasonally adjusted terms were:

- metal ores and minerals, down \$109m (5%), in contrast to an average February to March rise of 24% over the previous three years, largely driven by:
 - copper ore, down \$135m (37%), on decreased volumes
 - non-agglomerated iron ore, down \$81m (8%), with volumes down 12% and prices up 4%.
- other mineral fuels, down \$230m (19%), in contrast to an average February to March rise of 14% over the previous three years, largely driven by decreased volumes for:
 - crude oil, down \$144m (26%)
 - LNG exports, down \$90m (25%).
- metals (excluding non-monetary gold), up \$129m (14%), compared to an average February to March rise of 27% over the previous three years, largely due to copper and aluminium exports not sustaining the previous three year average increase.

Consistent with reporting by market commentators and the press, export volumes of iron ore, crude oil and LNG have been adversely impacted by cyclones in the Pilbara region of Western Australia during the first quarter of 2006, with temporary closures of operations and some flooding of mining sites.

OTHER GOODS

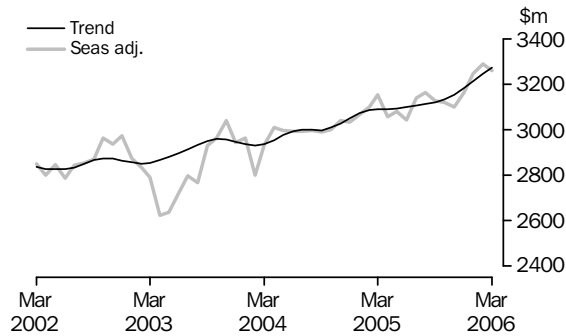
The trend estimate of other goods exports rose \$37m (4%) to \$947m.

In seasonally adjusted terms, exports of other goods fell \$69m (7%) to \$878m.

The main component contributing to the fall in the seasonally adjusted estimates was non-monetary gold, down \$103m (16%), partly offset by goods for processing, up \$26m (15%).

Exports of services

SERVICES CREDITS



In trend terms, services credits rose \$29m (1%) to \$3,274m.

Seasonally adjusted, services credits fell \$30m (1%) to \$3,260m.

The movements in the seasonally adjusted components contributing to this fall were:

- travel services, down \$12m (1%)
- other services, down \$12m (1%)
- transportation services, down \$6m (1%).

Seasonally adjusted, tourism related services credits fell \$16m (1%) to \$2,069m.

IMPORTS OF GOODS AND SERVICES

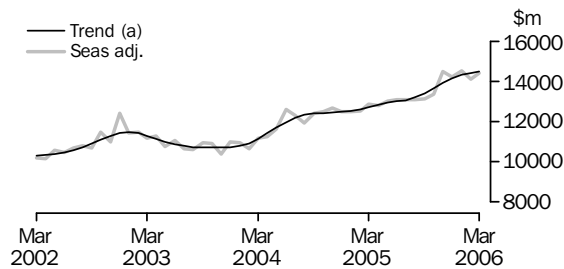
The trend estimate of goods and services debits rose \$57m between February and March to \$17,741m.

In seasonally adjusted terms, goods and services debits rose \$244m (1%) to \$17,617m.

Capital goods rose \$410m (13%), consumption goods rose \$46m (1%), other goods rose \$66m (11%), while intermediate and other merchandise goods fell \$242m (4%). Services debits fell \$36m (1%).

Imports of goods

GOODS DEBITS



(a) Trend estimates exclude abnormal imports of aircraft in December 2002.

Preliminary analysis shows that goods imports volumes, in seasonally adjusted terms, increased about 0.9% during the March quarter 2006. The Chain Laspeyres price index rose about 2.3% and the implicit price deflator rose about 2.5%. The final volume and price outcomes will be published in the March quarter 2006 issue of *Balance of Payments and International Investment Position, Australia* (cat. no. 5302.0).

ANALYSIS AND COMMENTS *continued*

Imports of goods continued

CONSUMPTION GOODS

The trend estimate of imports of consumption goods fell \$6m to \$4,194m.

In seasonally adjusted terms, imports of consumption goods rose \$46m (1%) to \$4,144m.

The components contributing to the rise in the seasonally adjusted estimates were:

- non-industrial transport equipment, up \$31m (3%)
- textiles, clothing and footwear, up \$20m (4%)
- household electrical items, up \$13m (4%).

Partly offsetting these effects were:

- food and beverages for consumption, down \$9m (2%)
- toys, books and leisure goods, down \$8m (2%).

In original terms, imports of consumption goods rose \$502m (14%) to \$4,131m

CAPITAL GOODS

The trend estimate of imports of capital goods fell \$5m to \$3,544m.

In seasonally adjusted terms, imports of capital goods rose \$410m (13%) to \$3,615m.

All components contributed to the rise in the seasonally adjusted estimates. The main movements were:

- civil aircraft, up \$195m
- machinery and industrial equipment, up \$76m (6%)
- industrial transport equipment n.e.s., up \$63m (12%)
- capital goods n.e.s., up \$57m (14%).

In original terms, imports of capital goods rose \$869m (32%) to \$3,551m.

INTERMEDIATE AND OTHER MERCHANDISE GOODS

The trend estimate of imports of intermediate goods rose \$30m to \$6,087m.

In seasonally adjusted terms, intermediate goods imports fell \$242m (4%) to \$5,991m.

The main components contributing to the fall in the seasonally adjusted estimates were:

- processed industrial supplies n.e.s., down \$121m (10%)
- fuel and lubricants, down \$68m (3%)
- organic and inorganic chemicals, down \$66m (18%).

Partly offsetting these effects was iron and steel, up \$13m (5%).

In original terms, intermediate and other merchandise goods rose \$387m (7%) to \$6,306m.

ANALYSIS AND COMMENTS *continued*

Imports of goods continued

OTHER GOODS

The trend estimate of imports of other goods rose \$39m (6%) to \$653m.

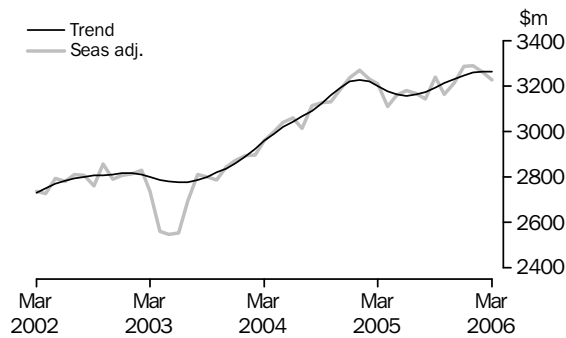
In seasonally adjusted terms, other goods imports rose \$66m (11%) to \$643m.

The main component contributing to the rise in the seasonally adjusted estimates was goods for processing, up \$61m (14%).

In original terms, other goods imports rose \$70m (12%) to \$647m.

Imports of services

SERVICES DEBITS



In trend terms, services debits fell \$1m to \$3,263m.

Seasonally adjusted, services debits fell \$36m (1%) to \$3,224m.

The movements in the seasonal components contributing to this fall were:

- transportation services, down \$41m (3%), with freight services down \$53m
- other services, down \$7m (1%).

Partly offsetting these effects was travel services, up \$12m (1%).

Seasonally adjusted, tourism related services debits rose \$15m (1%) to \$1,665m.

GOODS AND SERVICES (a), Summary: Seasonally Adjusted and Trend Estimates

Months	BALANCE	CREDITS					DEBITS					
	On goods and services	Total goods and services	Total goods	Rural goods (b)	Non-rural and other goods (b)	Total services	Total goods and services	Total goods	Consumption goods	Capital goods	Intermediate and other goods	Total services
	\$m	\$m	\$m	\$m	\$m	\$m	\$m	\$m	\$m	\$m	\$m	\$m
SEASONALLY ADJUSTED												
2005												
January	-2 187	13 576	10 510	2 058	8 452	3 066	-15 763	-12 487	-4 278	-2 811	-5 398	-3 276
February	-2 146	13 628	10 527	2 121	8 406	3 101	-15 774	-12 535	-4 184	-2 956	-5 395	-3 239
March	-2 573	13 488	10 334	1 957	8 377	3 154	-16 061	-12 849	-3 967	-2 897	-5 985	-3 212
April	-1 107	14 825	11 770	2 093	9 677	3 055	-15 932	-12 797	-3 920	-2 977	-5 900	-3 135
May	-1 166	15 038	11 959	2 104	9 855	3 079	-16 204	-13 022	-3 952	-3 094	-5 976	-3 182
June	-1 644	14 667	11 625	2 072	9 553	3 042	-16 311	-13 105	-3 986	-3 138	-5 981	-3 206
July	-912	15 362	12 223	2 098	10 125	3 139	-16 274	-13 105	-4 013	-2 976	-6 116	-3 169
August	-1 298	14 935	11 771	2 033	9 738	3 164	-16 233	-13 088	-4 093	-2 899	-6 096	-3 145
September	-1 596	14 787	11 662	1 999	9 663	3 125	-16 383	-13 141	-4 025	-3 002	-6 114	-3 242
October	-1 353	15 151	12 031	2 029	10 002	3 120	-16 504	-13 341	-3 903	-3 334	-6 104	-3 163
November	-2 395	15 315	12 216	1 987	10 229	3 099	-17 710	-14 492	-4 327	-3 658	-6 507	-3 218
December	-959	16 550	13 386	2 121	11 265	3 164	-17 509	-14 220	-4 301	-3 533	-6 386	-3 289
2006												
January	-2 422	15 372	12 125	2 141	9 984	3 247	-17 794	-14 506	-4 227	-3 657	-6 622	-3 288
February	-415	16 958	13 668	2 107	11 561	3 290	-17 373	-14 113	-4 098	-3 205	-6 810	-3 260
March	-1 545	16 072	12 812	2 260	10 552	3 260	-17 617	-14 393	-4 144	-3 615	-6 634	-3 224
TREND ESTIMATES												
2005												
January	-2 282	13 467	10 394	2 058	8 336	3 073	-15 749	-12 517	-3 958	-2 957	-5 602	-3 232
February	-2 193	13 622	10 537	2 050	8 487	3 085	-15 815	-12 587	-3 983	-2 952	-5 652	-3 228
March	-2 087	13 823	10 732	2 056	8 676	3 091	-15 910	-12 697	-3 994	-2 962	-5 741	-3 213
April(c)	-1 408	14 618	11 528	2 068	9 460	3 090	-16 026	-12 833	-3 997	-2 983	-5 853	-3 193
May	-1 313	14 801	11 708	2 074	9 634	3 093	-16 114	-12 934	-3 989	-2 993	-5 952	-3 180
June	-1 272	14 903	11 804	2 071	9 733	3 099	-16 175	-13 003	-3 980	-2 999	-6 024	-3 172
July	-1 274	14 965	11 859	2 059	9 800	3 106	-16 239	-13 066	-3 988	-3 013	-6 065	-3 173
August	-1 363	15 006	11 893	2 042	9 851	3 113	-16 369	-13 188	-4 022	-3 071	-6 095	-3 181
September	-1 499	15 093	11 972	2 028	9 944	3 121	-16 592	-13 398	-4 072	-3 172	-6 154	-3 194
October	-1 609	15 270	12 136	2 027	10 109	3 134	-16 879	-13 667	-4 121	-3 297	-6 249	-3 212
November	-1 634	15 528	12 375	2 047	10 328	3 153	-17 162	-13 930	-4 161	-3 411	-6 358	-3 232
December	-1 602	15 802	12 621	2 081	10 540	3 181	-17 404	-14 155	-4 190	-3 493	-6 472	-3 249
2006												
January	-1 512	16 060	12 846	2 120	10 726	3 214	-17 572	-14 313	-4 201	-3 532	-6 580	-3 259
February	-1 411	16 273	13 028	2 159	10 869	3 245	-17 684	-14 420	-4 200	-3 549	-6 671	-3 264
March	-1 307	16 434	13 160	2 194	10 966	3 274	-17 741	-14 478	-4 194	-3 544	-6 740	-3 263

(a) For sign conventions, see paragraph 9 of the Explanatory Notes.

(b) For all time periods, estimates for sugar, sugar preparations and honey are included in Non-rural and other goods.

(c) A trend break of \$600m has been applied to Non-rural and other goods credits in April 2005.

GOODS AND SERVICES(a), Summary: Original

	BALANCE	CREDITS					DEBITS					
	<i>On goods and services</i>	<i>Total goods and services</i>	<i>Total goods</i>	<i>Rural goods(b)</i>	<i>Non-rural and other goods(b)</i>	<i>Total services</i>	<i>Total goods and services</i>	<i>Total goods</i>	<i>Con-sumption goods</i>	<i>Capital goods</i>	<i>Inter-mediate and other goods</i>	<i>Total services</i>
	\$m	\$m	\$m	\$m	\$m	\$m	\$m	\$m	\$m	\$m	\$m	\$m
FINANCIAL YEAR												
2002-03	-17 479	149 691	115 800	25 484	90 316	33 891	-167 170	-134 278	-41 228	-31 554	-61 496	-32 892
2003-04	-23 030	144 676	109 504	24 560	84 944	35 172	-167 706	-133 026	-42 916	-32 118	-57 992	-34 680
2004-05	-24 491	164 390	127 903	25 687	102 216	36 487	-188 881	-150 870	-47 141	-35 959	-67 770	-38 011
MONTHS												
2005												
January	-2 250	12 405	9 343	1 720	7 623	3 062	-14 655	-11 267	-3 716	-2 413	-5 138	-3 388
February	-1 431	12 649	9 514	2 022	7 492	3 135	-14 080	-11 279	-3 713	-2 478	-5 088	-2 801
March	-1 878	13 758	10 560	2 024	8 536	3 198	-15 636	-12 595	-3 699	-2 850	-6 046	-3 041
April	-1 077	14 718	11 624	2 103	9 521	3 094	-15 795	-12 676	-3 881	-2 829	-5 966	-3 119
May	-809	15 133	12 197	2 207	9 990	2 936	-15 942	-12 921	-3 680	-3 199	-6 042	-3 021
June	-1 833	14 546	11 692	2 075	9 617	2 854	-16 379	-13 152	-3 881	-3 346	-5 925	-3 227
July	-738	15 566	12 406	2 095	10 311	3 160	-16 304	-12 959	-4 022	-2 961	-5 976	-3 345
August	-1 926	15 240	12 045	2 046	9 999	3 195	-17 166	-14 007	-4 492	-3 157	-6 358	-3 159
September	-2 519	14 879	11 896	2 035	9 861	2 983	-17 398	-13 860	-4 544	-3 068	-6 248	-3 538
October	-1 085	15 933	12 699	2 109	10 590	3 234	-17 018	-13 746	-4 222	-3 432	-6 092	-3 272
November	-3 098	15 402	12 208	2 003	10 205	3 194	-18 500	-15 389	-4 818	-3 931	-6 640	-3 111
December	-91	17 236	14 036	2 246	11 790	3 200	-17 327	-13 896	-4 130	-3 534	-6 232	-3 431
2006												
January	-2 864	14 133	10 890	1 796	9 094	3 243	-16 997	-13 586	-3 806	-3 271	-6 509	-3 411
February	7	15 637	12 308	2 013	10 295	3 329	-15 630	-12 807	-3 629	-2 682	-6 496	-2 823
March	-1 158	16 568	13 195	2 339	10 856	3 373	-17 726	-14 635	-4 131	-3 551	-6 953	-3 091
FINANCIAL YEAR TO DATE												
9 months ended March												
2005	-20 772	119 993	92 390	19 302	73 088	27 603	-140 765	-112 121	-35 699	-26 585	-49 837	-28 644
2006	-13 472	140 594	111 683	18 682	93 001	28 911	-154 066	-124 885	-37 794	-29 587	-57 504	-29 181

(a) For sign conventions, see paragraph 9 of the Explanatory Notes.

(b) For all time periods, estimates for sugar, sugar preparations and honey are included in Non-rural and other goods.

							9 MONTHS		Change
							ENDED MARCH		
	2002-03	2003-04	2004-05	Jan 2006	Feb 2006	Mar 2006	2005	2006	
	\$m	\$m	\$m	\$m	\$m	\$m	\$m	%	
Total goods credits	115 800	109 504	127 903	10 890	12 308	13 195	92 390	111 683	20.9
<i>Rural goods</i>	25 484	24 560	25 687	1 796	2 013	2 339	19 302	18 682	-3.2
Meat and meat preparations	5 655	5 758	6 937	334	522	633	5 049	4 941	-2.1
Cereal grains and cereal preparations	4 487	5 094	5 159	480	482	494	4 178	3 562	-14.7
Wool and sheepskins	3 545	2 778	2 838	139	197	286	2 089	1 880	-10.0
Other rural(a)	11 797	10 930	10 753	843	812	926	7 986	8 299	3.9
<i>Non-rural goods</i>	81 624	76 970	94 364	8 204	9 338	9 965	67 295	85 961	27.7
Metal ores and minerals	14 523	14 888	19 854	1 769	2 353	2 244	13 666	19 822	45.0
Coal, coke and briquettes	11 987	11 001	17 236	2 134	1 806	2 119	11 541	18 332	58.8
Other mineral fuels	11 049	8 766	11 151	995	1 209	979	8 192	10 081	23.1
Metals (excl. non-monetary gold)	8 711	7 759	8 668	847	902	1 031	6 381	7 677	20.3
Machinery	7 362	6 839	7 488	451	639	740	5 550	6 020	8.5
Transport equipment	6 273	5 155	4 943	178	390	468	3 481	3 971	14.1
Other manufactures	13 485	13 276	14 043	976	1 176	1 313	10 321	11 157	8.1
Other non-rural (incl. sugar and beverages)	8 234	9 286	10 981	854	863	1 071	8 163	8 901	9.0
<i>Other goods</i>	8 692	7 974	7 852	890	957	891	5 793	7 040	21.5
Goods for processing	2 037	1 289	955	213	192	224	682	1 115	63.5
Repairs on goods	60	75	67	4	4	5	44	56	27.3
Goods procured in ports by carriers	877	771	1 072	116	123	127	761	1 036	36.1
Non-monetary gold	5 718	5 839	5 758	557	638	535	4 306	4 833	12.2

(a) For all time periods, estimates for sugar, sugar preparations and honey are included in Other non-rural.

GOODS DEBITS (a): Original

							9 MONTHS ENDED MARCH		Change %
	2002-03	2003-04	2004-05	Jan 2006	Feb 2006	Mar 2006	2005	2006	
	\$m	\$m	\$m	\$m	\$m	\$m	\$m	\$m	
Total goods debits	-134 278	-133 026	-150 870	-13 586	-12 807	-14 635	-112 121	-124 885	11.4
<i>Consumption goods</i>	-41 228	-42 916	-47 141	-3 806	-3 629	-4 131	-35 699	-37 794	5.9
Food and beverages, mainly for consumption	-5 067	-5 167	-5 767	-499	-454	-505	-4 376	-4 657	6.4
Household electrical items	-3 657	-3 793	-4 021	-292	-295	-352	-3 146	-3 226	2.5
Non-industrial transport equipment	-11 302	-12 326	-13 003	-913	-912	-1 118	-9 477	-9 916	4.6
Textiles, clothing and footwear	-5 237	-5 078	-5 812	-621	-545	-547	-4 526	-4 903	8.3
Toys, books and leisure goods	-3 740	-3 593	-3 740	-259	-275	-297	-2 869	-3 076	7.2
Consumption goods n.e.s.	-12 225	-12 959	-14 798	-1 222	-1 148	-1 312	-11 305	-12 016	6.3
<i>Capital goods</i>	-31 554	-32 118	-35 959	-3 271	-2 682	-3 551	-26 585	-29 587	11.3
Machinery and industrial equipment	-11 007	-11 064	-13 406	-1 131	-1 028	-1 227	-10 104	-10 649	5.4
ADP equipment	-4 908	-5 138	-5 761	-463	-406	-568	-4 069	-4 372	7.4
Telecommunications equipment	-3 619	-4 105	-4 567	-409	-397	-502	-3 461	-3 878	12.0
Civil aircraft	-3 887	-3 061	-2 496	-515	-60	-255	-1 842	-2 446	32.8
Industrial transport equipment n.e.s.	-3 881	-4 144	-4 976	-327	-423	-554	-3 589	-4 068	13.3
Capital goods n.e.s.	-4 252	-4 606	-4 753	-426	-368	-445	-3 520	-4 174	18.6
<i>Intermediate and other merchandise goods</i>	-55 863	-52 866	-62 636	-5 807	-5 919	-6 306	-46 034	-52 654	14.4
Food and beverages, mainly for industry	-736	-625	-659	-52	-42	-57	-490	-478	-2.4
Primary industrial supplies n.e.s.	-1 220	-1 079	-1 052	-94	-83	-123	-783	-854	9.1
Fuels and lubricants	-10 393	-9 917	-14 722	-1 728	-1 973	-1 905	-10 447	-14 860	42.2
Parts for transport equipment	-7 258	-6 548	-7 008	-545	-554	-668	-5 178	-5 416	4.6
Parts for ADP equipment	-2 011	-1 812	-1 787	-147	-139	-184	-1 318	-1 349	2.4
Other parts for capital goods	-8 605	-8 553	-9 489	-818	-753	-860	-7 117	-7 536	5.9
Organic and inorganic chemicals	-3 089	-3 048	-3 622	-347	-377	-349	-2 684	-3 071	14.4
Paper and paperboard	-2 326	-2 242	-2 313	-195	-171	-195	-1 772	-1 755	-1.0
Textile yarn and fabrics	-1 839	-1 576	-1 453	-122	-99	-112	-1 116	-1 014	-9.1
Iron and steel	-1 960	-2 026	-3 008	-246	-259	-276	-2 120	-2 504	18.1
Plastics	-2 478	-2 177	-2 428	-229	-196	-208	-1 851	-1 881	1.6
Processed industrial supplies n.e.s.	-12 238	-12 029	-14 041	-1 201	-1 203	-1 296	-10 422	-11 140	6.9
Other merchandise goods	-1 710	-1 234	-1 054	-83	-70	-73	-736	-796	8.2
<i>Other goods</i>	-5 633	-5 126	-5 134	-702	-577	-647	-3 803	-4 850	27.5
Goods for processing	-3 958	-3 369	-3 030	-547	-424	-485	-2 162	-3 167	46.5
Repairs on goods	-251	-219	-182	-4	-7	-6	-127	-88	-30.7
Goods procured in ports by carriers	-878	-802	-1 049	-115	-115	-116	-779	-1 039	33.4
Non-monetary gold	-546	-736	-873	-36	-31	-40	-735	-556	-24.4

(a) For sign conventions, see paragraph 9 of the Explanatory Notes.

GOODS CREDITS: Seasonally Adjusted

	Jun 2005	Jul 2005	Aug 2005	Sep 2005	Oct 2005	Nov 2005	Dec 2005	Jan 2006	Feb 2006	Mar 2006
	\$m	\$m	\$m	\$m	\$m	\$m	\$m	\$m	\$m	\$m
Total goods credits	11 625	12 223	11 771	11 662	12 031	12 216	13 386	12 125	13 668	12 812
<i>Rural goods</i>	2 072	2 098	2 033	1 999	2 029	1 987	2 121	2 141	2 107	2 260
Meat and meat preparations	593	603	554	513	530	545	571	544	565	581
Cereal grains and cereal preparations	306	353	386	343	379	330	421	443	423	499
Wool and sheepskins	250	233	191	200	202	197	201	215	204	230
Other rural(a)	923	909	902	943	918	915	928	939	915	950
<i>Non-rural goods</i>	8 973	9 426	8 993	9 030	9 333	9 679	10 203	9 140	10 614	9 674
Metal ores and minerals	1 963	2 121	1 970	2 034	2 144	2 262	2 641	1 946	2 688	2 217
Coal, coke and briquettes	1 938	1 983	1 972	2 033	2 078	2 097	2 008	2 038	2 053	2 101
Other mineral fuels	1 023	1 217	1 034	928	1 057	1 120	1 132	1 008	1 377	979
Metals (excl. non-monetary gold)	703	759	757	772	732	861	1 024	844	1 023	955
Machinery	639	631	689	648	670	651	658	654	705	704
Transport equipment	458	459	467	483	443	473	417	385	417	438
Other manufactures	1 223	1 238	1 230	1 157	1 243	1 237	1 306	1 272	1 272	1 243
Other non-rural (incl. sugar and beverages)	1 026	1 018	874	975	966	978	1 017	993	1 079	1 037
<i>Other goods</i>	580	699	745	633	669	550	1 062	844	947	878
Goods for processing(b)	109	77	59	91	73	143	122	165	179	205
Repairs on goods(c)	5	5	9	7	5	6	11	4	4	5
Goods procured in ports by carriers	117	109	113	107	108	105	105	118	126	133
Non-monetary gold(d)	349	508	564	428	483	296	824	557	638	535

- (a) For all time periods, estimates for sugar, sugar preparations and honey are included in Other non-rural.
- (b) In using these seasonally adjusted series, care should be exercised because of the difficulties associated with reliably estimating the seasonal pattern.
- (c) This component is not seasonally adjusted.
- (d) From October 1995, this component is not seasonally adjusted.

GOODS DEBITS(a): Seasonally Adjusted

	Jun 2005	Jul 2005	Aug 2005	Sep 2005	Oct 2005	Nov 2005	Dec 2005	Jan 2006	Feb 2006	Mar 2006
	\$m	\$m	\$m	\$m	\$m	\$m	\$m	\$m	\$m	\$m
Total goods debits	-13 105	-13 105	-13 088	-13 141	-13 341	-14 492	-14 220	-14 506	-14 113	-14 393
<i>Consumption goods</i>	-3 986	-4 013	-4 093	-4 025	-3 903	-4 327	-4 301	-4 227	-4 098	-4 144
Food and beverages, mainly for consumption	-500	-487	-504	-510	-454	-544	-510	-503	-520	-511
Household electrical items	-297	-329	-330	-348	-304	-359	-365	-375	-366	-379
Non-industrial transport equipment	-1 130	-1 107	-1 167	-1 092	-1 093	-1 161	-1 152	-1 101	-1 045	-1 076
Textiles, clothing and footwear	-480	-489	-486	-500	-505	-555	-563	-559	-507	-527
Toys, books and leisure goods	-307	-325	-330	-340	-295	-343	-334	-331	-351	-343
Consumption goods n.e.s.	-1 272	-1 276	-1 276	-1 235	-1 252	-1 365	-1 377	-1 358	-1 309	-1 308
<i>Capital goods</i>	-3 138	-2 976	-2 899	-3 002	-3 334	-3 658	-3 533	-3 657	-3 205	-3 615
Machinery and industrial equipment	-1 129	-1 167	-1 117	-1 096	-1 083	-1 118	-1 176	-1 165	-1 209	-1 285
ADP equipment	-488	-505	-489	-489	-453	-533	-519	-555	-519	-526
Telecommunications equipment	-356	-357	-381	-431	-391	-434	-446	-562	-495	-507
Civil aircraft(b)	-350	-97	-82	-171	-398	-533	-335	-515	-60	-255
Industrial transport equipment n.e.s.	-389	-446	-448	-427	-513	-461	-493	-373	-514	-577
Capital goods n.e.s.	-426	-404	-382	-388	-496	-579	-564	-487	-408	-465
<i>Intermediate and other merchandise goods</i>	-5 501	-5 680	-5 436	-5 646	-5 751	-6 045	-5 840	-5 917	-6 233	-5 991
Food and beverages, mainly for industry	-56	-57	-49	-55	-54	-66	-51	-48	-48	-51
Primary industrial supplies n.e.s.(c)	-95	-81	-93	-99	-88	-87	-83	-101	-100	-105
Fuels and lubricants(b)	-1 456	-1 542	-1 367	-1 478	-1 650	-1 601	-1 616	-1 728	-1 973	-1 905
Parts for transport equipment	-580	-566	-571	-609	-581	-607	-623	-592	-631	-633
Parts for ADP equipment	-147	-145	-140	-142	-150	-145	-150	-163	-162	-165
Other parts for capital goods	-794	-796	-787	-830	-814	-850	-874	-862	-838	-835
Organic and inorganic chemicals(c)	-252	-350	-346	-308	-312	-493	-326	-352	-366	-300
Paper and paperboard	-195	-181	-189	-196	-189	-204	-186	-193	-184	-181
Textile yarn and fabrics	-110	-108	-107	-108	-106	-119	-117	-122	-116	-114
Iron and steel	-281	-297	-314	-275	-247	-335	-268	-225	-266	-279
Plastics	-200	-203	-200	-208	-202	-214	-205	-224	-208	-200
Processed industrial supplies n.e.s.	-1 268	-1 286	-1 205	-1 256	-1 160	-1 239	-1 272	-1 224	-1 271	-1 150
Other merchandise goods(b)	-67	-68	-68	-82	-198	-85	-69	-83	-70	-73
<i>Other goods</i>	-480	-436	-660	-468	-353	-462	-546	-705	-577	-643
Goods for processing(b)	-308	-294	-387	-237	-150	-278	-365	-547	-424	-485
Repairs on goods(c)	-29	-10	-12	-13	-12	-19	-6	-7	-7	-2
Goods procured in ports by carriers(b)	-90	-109	-109	-109	-122	-122	-122	-115	-115	-116
Non-monetary gold(d)	-53	-23	-152	-109	-69	-43	-53	-36	-31	-40

(a) For sign conventions, see paragraph 9 of the Explanatory Notes.

(b) These components are not seasonally adjusted.

(c) In using these seasonally adjusted series, care should be exercised because of the difficulties associated with reliably estimating the seasonal pattern.

(d) From October 1995, this component is not seasonally adjusted.

	Jun 2005	Jul 2005	Aug 2005	Sep 2005	Oct 2005	Nov 2005	Dec 2005	Jan 2006	Feb 2006	Mar 2006
	\$m	\$m	\$m	\$m	\$m	\$m	\$m	\$m	\$m	\$m
Total goods credits	11 804	11 859	11 893	11 972	12 136	12 375	12 621	12 846	13 028	13 160
<i>Rural goods</i>	2 071	2 059	2 042	2 028	2 027	2 047	2 081	2 120	2 159	2 194
Meat and meat preparations	592	578	560	546	539	542	549	558	566	574
Cereal grains and cereal preparations	334	338	347	357	368	382	401	424	446	468
Wool and sheepskins	236	227	215	204	198	199	204	209	214	218
Other rural(a)	909	916	920	921	922	924	927	929	933	934
<i>Non-rural goods</i>	9 047	9 117	9 179	9 268	9 406	9 572	9 727	9 859	9 959	10 019
Metal ores and minerals	2 021	2 037	2 059	2 105	2 176	2 250	2 311	2 354	2 381	2 390
Coal, coke and briquettes	1 918	1 970	2 010	2 035	2 047	2 053	2 055	2 058	2 063	2 065
Other mineral fuels	1 085	1 076	1 059	1 050	1 057	1 079	1 104	1 126	1 140	1 147
Metals (excl. non-monetary gold)	734	735	747	772	812	857	899	936	966	989
Machinery	649	654	657	657	658	661	666	673	682	693
Transport equipment	465	470	470	464	455	443	430	421	415	411
Other manufactures	1 221	1 219	1 217	1 221	1 232	1 247	1 260	1 269	1 273	1 276
Other non-rural (incl. sugar and beverages)	954	956	960	964	969	982	1 002	1 022	1 039	1 048
<i>Other goods</i>	686	683	672	676	703	756	813	867	910	947
Goods for processing	83	82	81	85	97	116	138	159	178	194
Repairs on goods	7	6	6	7	7	7	6	6	5	5
Goods procured in ports by carriers	111	113	111	109	107	108	112	117	122	127
Non-monetary gold	485	482	474	475	492	525	557	585	605	621

(a) For all time periods, estimates for sugar, sugar preparations and honey are included in Other non-rural.

GOODS DEBITS(a): Trend Estimates

	Jun 2005	Jul 2005	Aug 2005	Sep 2005	Oct 2005	Nov 2005	Dec 2005	Jan 2006	Feb 2006	Mar 2006
	\$m	\$m	\$m	\$m	\$m	\$m	\$m	\$m	\$m	\$m
Total goods debits	-13 003	-13 066	-13 188	-13 398	-13 667	-13 930	-14 155	-14 313	-14 420	-14 478
<i>Consumption goods</i>	-3 980	-3 988	-4 022	-4 072	-4 121	-4 161	-4 190	-4 201	-4 200	-4 194
Food and beverages, mainly for consumption	-495	-495	-496	-498	-502	-506	-509	-512	-514	-516
Household electrical items	-319	-321	-325	-332	-340	-349	-358	-366	-373	-379
Non-industrial transport equipment	-1 121	-1 119	-1 122	-1 127	-1 128	-1 124	-1 115	-1 103	-1 089	-1 079
Textiles, clothing and footwear	-479	-482	-494	-508	-522	-534	-541	-542	-541	-536
Toys, books and leisure goods	-319	-322	-324	-325	-327	-329	-333	-337	-341	-345
Consumption goods n.e.s.	-1 247	-1 249	-1 261	-1 282	-1 302	-1 319	-1 334	-1 341	-1 342	-1 339
<i>Capital goods</i>	-2 999	-3 013	-3 071	-3 172	-3 297	-3 411	-3 493	-3 532	-3 549	-3 544
Machinery and industrial equipment	-1 161	-1 140	-1 121	-1 109	-1 110	-1 126	-1 153	-1 183	-1 214	-1 243
ADP equipment	-497	-493	-489	-490	-497	-508	-518	-527	-534	-537
Telecommunications equipment	-356	-363	-377	-397	-421	-445	-469	-491	-509	-522
Civil aircraft	-168	-182	-215	-269	-327	-366	-375	-351	-311	-262
Industrial transport equipment n.e.s.	-420	-434	-448	-456	-460	-463	-469	-479	-494	-511
Capital goods n.e.s.	-397	-401	-421	-451	-482	-503	-509	-501	-487	-469
<i>Intermediate and other merchandise goods</i>	-5 543	-5 577	-5 611	-5 674	-5 762	-5 852	-5 933	-6 002	-6 057	-6 087
Food and beverages, mainly for industry	-55	-55	-55	-56	-55	-55	-54	-52	-50	-49
Primary industrial supplies n.e.s.	-91	-92	-91	-90	-90	-90	-92	-95	-98	-101
Fuels and lubricants	-1 455	-1 481	-1 489	-1 509	-1 553	-1 617	-1 692	-1 770	-1 844	-1 902
Parts for transport equipment	-593	-585	-582	-585	-593	-602	-609	-616	-622	-626
Parts for ADP equipment	-147	-146	-144	-144	-146	-149	-153	-158	-161	-164
Other parts for capital goods	-794	-795	-803	-816	-832	-843	-850	-853	-853	-849
Organic and inorganic chemicals	-309	-315	-328	-346	-361	-369	-367	-360	-350	-340
Paper and paperboard	-189	-189	-190	-192	-193	-193	-192	-189	-187	-184
Textile yarn and fabrics	-108	-107	-107	-109	-112	-114	-116	-117	-118	-118
Iron and steel	-298	-296	-293	-289	-283	-276	-270	-266	-263	-263
Plastics	-198	-199	-202	-205	-208	-210	-211	-211	-210	-209
Processed industrial supplies n.e.s.	-1 219	-1 229	-1 234	-1 234	-1 232	-1 231	-1 232	-1 231	-1 226	-1 216
Other merchandise goods	-87	-88	-93	-99	-104	-103	-95	-84	-75	-66
<i>Other goods</i>	-481	-488	-484	-480	-487	-506	-539	-578	-614	-653
Goods for processing	-307	-296	-277	-266	-277	-310	-359	-412	-459	-504
Repairs on goods	-16	-16	-15	-14	-13	-11	-10	-8	-6	-4
Goods procured in ports by carriers	-97	-102	-108	-114	-118	-119	-119	-118	-118	-116
Non-monetary gold	-61	-74	-84	-86	-79	-66	-51	-40	-31	-29

(a) For sign conventions, see paragraph 9 of the Explanatory Notes.

SERVICES (a)(b), Summary: Original

							9 MONTHS ENDED MARCH		Change
	2002-03	2003-04	2004-05	Jan 2006	Feb 2006	Mar 2006	2005	2006	
	\$m	\$m	\$m	\$m	\$m	\$m	\$m	\$m	
Services credits	33 891	35 172	36 487	3 243	3 329	3 373	27 603	28 911	4.7
<i>Transportation services</i>	7 458	7 602	8 074	747	705	702	6 145	6 294	2.4
Freight	920	830	776	45	45	45	597	448	-25.0
Passenger and other	6 538	6 772	7 298	702	660	657	5 548	5 846	5.4
<i>Travel services</i>	16 850	18 300	19 068	1 671	1 800	1 854	14 499	15 254	5.2
<i>Other services</i>	9 583	9 270	9 345	825	824	817	6 959	7 363	5.8
Services debits	-32 892	-34 680	-38 011	-3 411	-2 823	-3 091	-28 644	-29 181	1.9
<i>Transportation services</i>	-10 960	-11 634	-13 203	-1 136	-1 030	-1 142	-9 921	-10 260	3.4
Freight	-5 808	-6 056	-7 500	-656	-625	-673	-5 674	-5 881	3.6
Passenger and other	-5 152	-5 578	-5 703	-480	-405	-469	-4 247	-4 379	3.1
<i>Travel services</i>	-11 013	-12 581	-14 585	-1 427	-940	-1 096	-11 064	-11 172	1.0
<i>Other services</i>	-10 919	-10 465	-10 223	-848	-853	-853	-7 659	-7 749	1.2
Memorandum items:									
Tourism related service credits(c)	20 901	22 273	23 212	2 072	2 159	2 213	17 718	18 504	4.4
Tourism related service debits(c)	-15 692	-17 703	-19 772	-1 871	-1 309	-1 522	-14 922	-15 216	2.0

(a) For sign conventions, see paragraph 9 of the Explanatory Notes.
 (b) For more detailed trade in services by commodity, see table 11.

(c) For a more detailed explanation of tourism related services, see paragraphs 15 and 16 of the Explanatory Notes.

	Jun 2005	Jul 2005	Aug 2005	Sep 2005	Oct 2005	Nov 2005	Dec 2005	Jan 2006	Feb 2006	Mar 2006
	\$m	\$m	\$m	\$m	\$m	\$m	\$m	\$m	\$m	\$m
SEASONALLY ADJUSTED										
Services credits	3 042	3 139	3 164	3 125	3 120	3 099	3 164	3 247	3 290	3 260
<i>Transportation services</i>	678	683	703	679	677	671	680	698	700	694
Freight	58	55	53	54	50	50	49	48	47	46
Passenger and other	620	628	650	625	627	621	631	650	653	648
<i>Travel services</i>	1 583	1 659	1 664	1 651	1 624	1 604	1 653	1 707	1 739	1 727
<i>Other services(b)</i>	781	797	797	795	819	824	831	842	851	839
Services debits	-3 206	-3 169	-3 145	-3 242	-3 163	-3 218	-3 289	-3 288	-3 260	-3 224
<i>Transportation services</i>	-1 078	-1 093	-1 074	-1 105	-1 129	-1 159	-1 177	-1 200	-1 181	-1 140
Freight	-614	-620	-603	-612	-626	-668	-678	-697	-693	-640
Passenger and other	-464	-473	-471	-493	-503	-491	-499	-503	-488	-500
<i>Travel services</i>	-1 267	-1 228	-1 229	-1 289	-1 188	-1 200	-1 246	-1 213	-1 198	-1 210
<i>Other services(b)</i>	-861	-848	-842	-848	-846	-859	-866	-875	-881	-874
Memorandum items:										
Tourism related service credits(c)	1 943	2 019	2 026	1 991	1 967	1 937	1 992	2 040	2 085	2 069
Tourism related service debits(c)	-1 677	-1 658	-1 652	-1 759	-1 628	-1 636	-1 718	-1 682	-1 650	-1 665

TREND ESTIMATES										
Services credits	3 099	3 106	3 113	3 121	3 134	3 153	3 181	3 214	3 245	3 274
<i>Transportation services</i>	683	684	683	681	681	682	685	689	693	697
Freight	57	55	54	52	51	50	49	48	47	46
Passenger and other	626	629	629	629	630	632	636	641	646	651
<i>Travel services</i>	1 630	1 632	1 634	1 635	1 639	1 648	1 664	1 686	1 708	1 729
<i>Other services</i>	786	790	796	805	814	823	832	839	844	848
Services debits	-3 172	-3 173	-3 181	-3 194	-3 212	-3 232	-3 249	-3 259	-3 264	-3 263
<i>Transportation services</i>	-1 080	-1 082	-1 093	-1 110	-1 132	-1 152	-1 167	-1 176	-1 179	-1 178
Freight	-607	-607	-613	-624	-640	-656	-669	-678	-681	-681
Passenger and other	-473	-475	-480	-486	-492	-496	-498	-498	-498	-497
<i>Travel services</i>	-1 234	-1 239	-1 240	-1 236	-1 229	-1 222	-1 217	-1 212	-1 209	-1 205
<i>Other services</i>	-858	-852	-848	-848	-851	-858	-865	-871	-876	-880
Memorandum items:										
Tourism related service credits(c)	1 988	1 989	1 986	1 983	1 982	1 987	2 002	2 024	2 047	2 070
Tourism related service debits(c)	-1 668	-1 671	-1 673	-1 676	-1 677	-1 676	-1 673	-1 671	-1 669	-1 663

(a) For sign conventions, see paragraph 9 of the Explanatory Notes.

(b) In using these seasonally adjusted series, care should be exercised because of the difficulties associated with reliably estimating the seasonal pattern.

(c) For a more detailed explanation of tourism related services, see paragraphs 15 and 16 of the Explanatory Notes.

	CREDITS				DEBITS			
	<i>Jun Qtr</i>	<i>Sep Qtr</i>	<i>Dec Qtr</i>	<i>Mar Qtr</i>	<i>Jun Qtr</i>	<i>Sep Qtr</i>	<i>Dec Qtr</i>	<i>Mar Qtr</i>
	2005	2005	2005	2006	2005	2005	2005	2006
	\$m	\$m	\$m	\$m	\$m	\$m	\$m	\$m
Services	8 884	9 338	9 628	9 945	-9 367	-10 042	-9 814	-9 325
<i>Transportation services</i>	1 929	2 051	2 089	2 154	-3 282	-3 451	-3 501	-3 308
Passenger(c)	1 750	1 890	1 937	2 019	-1 254	-1 365	-1 262	-1 144
Freight	179	161	152	135	-1 826	-1 897	-2 030	-1 954
Other(c)	np	np	np	np	-202	-189	-209	-210
<i>Travel services</i>	4 569	4 966	4 963	5 325	-3 521	-4 104	-3 605	-3 463
Business	350	375	357	380	-535	-543	-486	-539
Personal	4 219	4 591	4 606	4 945	-2 986	-3 561	-3 119	-2 924
Education-related	1 868	2 017	1 677	2 020	-144	-254	-134	-191
Other	2 351	2 574	2 929	2 925	-2 842	-3 307	-2 985	-2 733
<i>Communication services(d)</i>	182	190	182	174	-172	-171	-163	-143
<i>Construction services</i>	27	27	30	25	—	—	—	—
<i>Insurance services</i>	171	176	176	176	-218	-225	-225	-225
<i>Financial services</i>	251	251	251	251	-146	-150	-150	-150
<i>Computer and information services</i>	270	260	262	275	-250	-242	-266	-209
<i>Royalties and license fees</i>	181	152	192	169	-515	-557	-585	-565
<i>Other business services</i>	980	948	1 151	999	-851	-773	-912	-801
Merchanting and other trade-related	169	150	249	232	-45	-55	-62	-57
Operational leasing	6	9	7	6	-165	-163	-189	-179
Miscellaneous business, professional and technical	805	789	895	761	-641	-555	-661	-565
Legal, accounting, management consulting and public relations	138	132	151	137	-96	-80	-92	-88
Advertising, market research and public opinion polling	26	21	32	32	-66	-30	-42	-43
Research and development	98	95	95	74	-49	-44	-47	-32
Architectural, engineering and other technical services	151	154	191	177	-92	-104	-98	-90
Agriculture, mining and on-site processing	33	38	36	23	-28	-28	-25	-16
Services between affiliated enterprises n.i.e.	267	257	294	235	-218	-190	-264	-215
Other	92	92	96	83	-92	-79	-93	-81
<i>Personal, cultural, and recreational services</i>	95	103	120	179	-199	-187	-205	-270
Audiovisual and related services	17	24	42	103	-164	-152	-166	-204
Personal, cultural and recreational services	78	79	78	76	-35	-35	-39	-66
<i>Government services n.i.e.</i>	229	214	212	218	-213	-182	-202	-191
Memorandum items:								
Tourism related services(e)	5 494	6 016	6 044	6 444	-4 850	-5 553	-4 961	-4 702

— nil or rounded to zero (including null cells)

np not available for publication but included in totals where applicable, unless otherwise indicated

(a) For sign conventions, see paragraph 9 of the Explanatory Notes.

(b) For more information see paragraphs 13 and 14 of the Explanatory Notes.

(c) Passenger transportation credits include other transportation services credits.

(d) Communications services includes other services n.i.e..

(e) For a more detailed explanation of tourism related services, see paragraphs 15 and 16 of the Explanatory Notes.

	Jan 2006	Feb 2006	Mar 2006	Per cent of total merchandise exports (a)	9 MONTHS ENDED MARCH	
					2005	2006
					\$m	\$m
MAJOR COMMODITIES						
011 Meat of bovine animals	195	354	439	3.4	3 584	3 339
041 Wheat	276	292	282	2.2	2 806	2 378
268 Wool and other animal hair	120	174	256	2.0	1 834	1 675
281 Iron ore and concentrates	828	1 060	960	7.4	5 191	9 244
285 Aluminium ore and concentrates	428	407	494	3.8	3 230	3 790
321 Coal, not agglomerated	2 113	1 801	2 118	16.2	11 485	18 294
333 Crude petroleum oils	346	567	417	3.2	4 103	4 730
334 Refined petroleum oils	289	285	337	2.6	1 812	2 436
343 Natural gas	375	375	273	2.1	2 329	3 098
684 Aluminium	407	462	450	3.5	3 010	3 710
781 Passenger motor vehicles	65	216	299	2.3	1 965	2 356
971 Gold, non-monetary	544	626	525	4.0	4 211	4 737

SECTION AND DIVISION OF THE SITC

0	Food and live animals(b)					
00	Live animals other than fish, crustaceans, molluscs and aquatic invertebrates	64	46	74	0.6	606 630
01	Meat and meat preparations	334	522	633	4.9	5 048 4 941
02	Dairy products and birds' eggs	180	190	215	1.6	1 780 1 880
03	Fish (not marine mammals), crustaceans, molluscs and aquatic invertebrates, and preparations thereof(b)	123	80	95	0.7	905 914
04	Cereals and cereal preparations(b)	480	482	494	3.8	4 180 3 563
05	Vegetables and fruit	94	88	129	1.0	937 1 006
06	Sugars, sugar preparations and honey(b)	26	11	24	0.2	157 186
07	Coffee, tea, cocoa, spices, and manufactures thereof	12	16	18	0.1	210 176
08	Feeding stuff for animals (excl. unmilled cereals)(b)	59	65	74	0.6	685 579
09	Miscellaneous edible products and preparations	31	32	37	0.3	354 329
	<i>Total food and live animals</i>	<i>1 403</i>	<i>1 532</i>	<i>1 794</i>	<i>13.7</i>	<i>14 861 14 204</i>
1	Beverages and tobacco					
11	Beverages	185	204	234	1.8	2 109 2 164
12	Tobacco and tobacco manufactures	6	3	8	0.1	82 63
	<i>Total beverages and tobacco</i>	<i>191</i>	<i>208</i>	<i>242</i>	<i>1.9</i>	<i>2 190 2 227</i>
2	Crude materials, inedible, except fuels(b)					
21	Hides, skins and furskins, raw(b)	35	45	62	0.5	507 444
22	Oil seeds and oleaginous fruits	57	89	27	0.2	375 311
23	Crude rubber (incl. synthetic and reclaimed)	—	—	—	—	9 4
24	Cork and wood	88	79	104	0.8	756 781
25	Pulp and waste paper	13	12	12	0.1	73 111
26	Textile fibres and their wastes (not manufactured into yarn or fabric)(b)	184	226	302	2.3	2 362 2 536
27	Crude fertilisers (excl. those of Division 56) and crude minerals (excl. coal, petroleum and precious stones)	45	35	49	0.4	337 379
28	Metalliferous ores and metal scrap(b)	1 724	2 318	2 195	16.8	13 329 19 443
29	Crude animal and vegetable materials, n.e.s.	16	17	29	0.2	219 206
	<i>Total crude materials, inedible, except fuels</i>	<i>2 162</i>	<i>2 821</i>	<i>2 781</i>	<i>21.3</i>	<i>17 965 24 216</i>
3	Mineral fuels, lubricants and related materials					
32	Coal, coke and briquettes	2 134	1 806	2 119	16.2	11 545 18 333
33	Petroleum, petroleum products and related materials	637	855	756	5.8	5 926 7 180
34	Gas, natural and manufactured	469	466	343	2.6	2 938 3 863
	<i>Total mineral fuels, lubricants and related materials</i>	<i>3 240</i>	<i>3 126</i>	<i>3 219</i>	<i>24.7</i>	<i>20 409 29 376</i>

— nil or rounded to zero (including null cells)

(b) Excludes exports commodities subject to a confidentiality restriction. These are included in Division 98.

(a) Per cent of total merchandise exports is calculated for the most recent month.

				Per cent of total merchandise exports (a)	9 MONTHS ENDED MARCH		
	Jan 2006	Feb 2006	Mar 2006		2005	2006	
	\$m	\$m	\$m		\$m	\$m	
SECTION AND DIVISION OF THE SITC							
4	Animal and vegetable oils, fats and waxes(b)						
41	Animal oils and fats	14	15	17	0.1	164	154
42	Fixed vegetable fats and oils, crude, refined or fractionated(b)	4	4	8	0.1	42	45
43	Fats and oils (processed), waxes and inedible mixtures or preparations, of animal or vegetable origin, n.e.s.	5	4	5	—	48	41
	<i>Total animal and vegetable oils, fats and waxes</i>	24	23	31	0.2	254	240
5	Chemicals and related products, n.e.s.(b)						
51	Organic chemicals(b)	9	6	10	0.1	99	80
52	Inorganic chemicals(b)	36	53	36	0.3	377	376
53	Dyeing, tanning and colouring materials	43	52	55	0.4	460	472
54	Medicinal and pharmaceutical products	211	273	296	2.3	2 026	2 537
55	Essential oils and resinoids and perfume materials; toilet, polishing and cleansing preparations	31	38	42	0.3	315	353
56	Fertilisers (excl. crude)	7	3	6	—	120	135
57	Plastics in primary forms(b)	15	16	21	0.2	198	213
58	Plastics in non-primary forms	21	25	29	0.2	221	246
59	Chemical materials and products, n.e.s.	49	61	61	0.5	457	524
	<i>Total chemicals and related products, n.e.s.</i>	421	527	555	4.3	4 273	4 934
6	Manufactured goods classified chiefly by material(b)						
61	Leather, leather manufactures, and dressed furskins, n.e.s.	24	31	40	0.3	338	295
62	Rubber manufactures, n.e.s.	10	11	14	0.1	117	121
63	Cork and wood manufactures (excl. furniture)(b)	13	18	19	0.1	178	161
64	Paper, paperboard, and articles of paper pulp, of paper or of paperboard	58	57	62	0.5	537	509
65	Textile yarn, fabrics, made-up articles, n.e.s., and related products	19	31	38	0.3	326	320
66	Non-metallic mineral manufactures, n.e.s.(b)	53	79	82	0.6	656	677
67	Iron and steel(b)	74	82	89	0.7	518	627
68	Non-ferrous metals	773	820	942	7.2	5 864	7 049
69	Manufactures of metals, n.e.s.	54	74	84	0.6	616	668
	<i>Total manufactured goods classified chiefly by material</i>	1 077	1 202	1 369	10.5	9 152	10 428
7	Machinery and transport equipment(b)						
71	Power generating machinery and equipment	61	110	123	0.9	743	939
72	Machinery specialised for particular industries	76	108	124	1.0	896	1 097
73	Metal working machinery	6	15	17	0.1	117	141
74	General industrial machinery and equipment, n.e.s. and machine parts, n.e.s.(b)	92	127	157	1.2	1 042	1 193
75	Office machines and automatic data processing machines	79	85	106	0.8	848	863
76	Telecommunications and sound recording and reproducing apparatus and equipment	46	75	75	0.6	699	624
77	Electrical machinery, apparatus, appliances, parts (incl. non-electrical counterparts of electrical domestic equipment)	86	116	134	1.0	1 190	1 139
78	Road vehicles (incl. air-cushion vehicles)	124	284	385	2.9	2 821	3 176
79	Transport equipment (excl. road vehicles)	54	117	83	0.6	659	795
	<i>Total machinery and transport equipment</i>	623	1 036	1 205	9.2	9 015	9 966

— nil or rounded to zero (including null cells)

(a) Per cent of total merchandise exports is calculated for the most recent month.

(b) Excludes exports commodities subject to a confidentiality restriction. These are included in Division 98.

				Per cent	9 MONTHS		
	Jan	Feb	Mar	of total	ENDED MARCH		
	2006	2006	2006	merchandise	2005	2006	
	\$m	\$m	\$m	exports(a)	\$m	\$m	
				%			
SECTION AND DIVISION OF THE SITC							
8	Miscellaneous manufactured articles(b)						
81	Prefabricated buildings; sanitary, plumbing, heating and lighting fixtures and fittings, n.e.s.	6	7	8	0.1	80	82
82	Furniture, parts thereof; bedding, mattresses, mattress supports, cushions and similar stuffed furnishings	7	11	13	0.1	99	101
83	Travel goods, handbags and similar containers	1	2	2	—	17	17
84	Articles of apparel and clothing accessories	13	20	25	0.2	213	190
85	Footwear(b)	2	4	4	—	33	31
87	Professional, scientific and controlling instruments and apparatus, n.e.s.	100	134	147	1.1	1 015	1 182
88	Photographic apparatus, equipment and supplies and optical goods, n.e.s.; watches and clocks	26	27	36	0.3	364	261
89	Miscellaneous manufactured articles, n.e.s.	163	143	178	1.4	1 422	1 568
	<i>Total miscellaneous manufactured articles</i>	<i>319</i>	<i>348</i>	<i>413</i>	<i>3.2</i>	<i>3 245</i>	<i>3 433</i>
9	Commodities and transactions not classified elsewhere in the SITC(c)(d)						
93	Special transactions and commodities not classified according to kind	269	262	305	2.3	1 398	1 832
95	Gold coin whether or not legal tender, and other coin being legal tender	13	12	10	0.1	94	95
96	Coin (excl. gold coin), not being legal tender	—	—	—	—	1	1
97	Gold, non-monetary (excl. gold ores and concentrates)	544	626	525	4.0	4 211	4 737
98	Combined confidential items excl. some of SITC 280 (exports only) and some of SITCs 510 and 520 (imports only)(c)(d)	471	455	604	4.6	4 457	4 757
	<i>Total commodities and transactions not classified elsewhere in the SITC</i>	<i>1 298</i>	<i>1 354</i>	<i>1 444</i>	<i>11.1</i>	<i>10 161</i>	<i>11 422</i>
	Total merchandise exports	10 759	12 177	13 052	100.0	91 524	110 445
	Balance of Payments Adjustments	131	131	143	. .	866	1 238
	Goods Credits (exports) on a Balance of Payments Basis	10 890	12 308	13 195	. .	92 390	111 683

. . not applicable

— nil or rounded to zero (including null cells)

(a) Per cent of total merchandise exports is calculated for the most recent month.

(b) Excludes exports commodities subject to a confidentiality restriction. These are included in Division 98.

(c) Includes exports commodities subject to a confidentiality restriction.

(d) Includes small value export entries which can not yet be allocated by commodity.

				Per cent of total merchandise imports(a)	9 MONTHS ENDED MARCH	
	Jan	Feb	Mar		
	2006	2006	2006		2005	2006
	\$m	\$m	\$m	%	\$m	\$m
MAJOR COMMODITIES						
333 Crude petroleum oils	1 039	1 121	1 250	8.6	7 102	9 021
334 Refined petroleum oils	681	811	630	4.3	3 191	5 657
542 Medicaments	459	460	533	3.7	4 295	4 494
641 Paper and paperboard	176	154	176	1.2	1 580	1 551
752 Automatic data processing machines	464	405	568	3.9	4 090	4 379
759 Parts and accessories of office machines	172	162	213	1.5	1 583	1 624
764 Telecommunications equipment	466	442	542	3.7	3 783	4 224
781 Passenger motor vehicles	784	818	1 007	7.0	8 379	8 667
782 Motor vehicles for the transport of goods	281	340	454	3.1	2 896	3 153
784 Parts and accessories of motor vehicles	171	175	187	1.3	1 701	1 705
792 Aircraft and associated equipment	534	237	370	2.6	2 901	3 452
971 Gold, non-monetary	528	386	445	3.1	1 724	2 858

SECTION AND DIVISION OF THE SITC

0	Food and live animals					
00	Live animals other than fish, crustaceans, molluscs and aquatic invertebrates	10	20	6	—	72 77
01	Meat and meat preparations	29	23	30	0.2	254 229
02	Dairy products and birds' eggs	36	34	38	0.3	277 312
03	Fish (not marine mammals), crustaceans, molluscs and aquatic invertebrates, and preparations thereof	91	77	89	0.6	741 788
04	Cereals and cereal preparations	32	28	33	0.2	313 334
05	Vegetables and fruit	104	89	85	0.6	835 884
06	Sugars, sugar preparations and honey	16	11	15	0.1	136 144
07	Coffee, tea, cocoa, spices, and manufactures thereof	57	54	59	0.4	534 569
08	Feeding stuff for animals (excl. unmilled cereals)	16	26	21	0.1	208 222
09	Miscellaneous edible products and preparations	94	94	108	0.7	845 899
	<i>Total food and live animals</i>	<i>484</i>	<i>457</i>	<i>483</i>	<i>3.3</i>	<i>4 217 4 458</i>
1	Beverages and tobacco					
11	Beverages	64	66	74	0.5	645 706
12	Tobacco and tobacco manufactures	23	15	14	0.1	128 145
	<i>Total beverages and tobacco</i>	<i>87</i>	<i>80</i>	<i>88</i>	<i>0.6</i>	<i>773 851</i>
2	Crude materials, inedible, except fuels					
21	Hides, skins and furskins, raw	—	—	—	—	2 1
22	Oil seeds and oleaginous fruits	2	2	4	—	41 35
23	Crude rubber (incl. synthetic and reclaimed)	14	14	19	0.1	110 125
24	Cork and wood	41	43	51	0.4	470 419
25	Pulp and waste paper	13	10	22	0.1	169 166
26	Textile fibres and their wastes (not manufactured into yarn or fabric)	12	11	12	0.1	117 107
27	Crude fertilisers (excl. those of Division 56) and crude minerals (excl. coal, petroleum and precious stones)	18	13	7	0.1	128 125
28	Metalliferous ores and metal scrap	18	28	45	0.3	208 273
29	Crude animal and vegetable materials, n.e.s.	30	20	25	0.2	208 205
	<i>Total crude materials, inedible, except fuels</i>	<i>149</i>	<i>142</i>	<i>185</i>	<i>1.3</i>	<i>1 453 1 455</i>
3	Mineral fuels, lubricants and related materials(b)					
32	Coal, coke and briquettes	2	1	2	—	15 20
33	Petroleum, petroleum products and related materials(b)	1 773	1 976	1 919	13.3	10 585 15 011
34	Gas, natural and manufactured	33	1	67	0.5	98 184
	<i>Total mineral fuels, lubricants and related materials</i>	<i>1 809</i>	<i>1 978</i>	<i>1 988</i>	<i>13.7</i>	<i>10 697 15 214</i>

— nil or rounded to zero (including null cells)

(a) Per cent of total merchandise imports is calculated for the most recent month.

(b) Excludes imports commodities subject to a confidentiality restriction. These are included in Division 98.

				Per cent of total merchandise imports(a)	9 MONTHS ENDED MARCH		
	Jan	Feb	Mar		2005	2006	
	2006	2006	2006				
	\$m	\$m	\$m	%	\$m	\$m	
SECTION AND DIVISION OF THE SITC							
4	Animal and vegetable oils, fats and waxes						
41	Animal oils and fats	1	1	1	—	12	14
42	Fixed vegetable fats and oils, crude, refined or fractionated	30	17	26	0.2	239	230
43	Fats and oils (processed), waxes and inedible mixtures or preparations, of animal or vegetable origin, n.e.s.	4	5	4	—	35	35
	<i>Total animal and vegetable oils, fats and waxes</i>	35	24	30	0.2	286	280
5	Chemicals and related products, n.e.s.(b)						
51	Organic chemicals	259	285	258	1.8	2 045	2 254
52	Inorganic chemicals(b)	89	93	90	0.6	642	818
53	Dyeing, tanning and colouring materials	47	43	49	0.3	409	420
54	Medicinal and pharmaceutical products	561	598	634	4.4	5 206	5 478
55	Essential oils and resinoids and perfume materials; toilet, polishing and cleansing preparations	118	110	129	0.9	1 030	1 136
56	Fertilisers (excl. crude)	57	107	127	0.9	693	625
57	Plastics in primary forms	129	109	116	0.8	989	1 028
58	Plastics in non-primary forms	100	87	92	0.6	861	855
59	Chemical materials and products, n.e.s.	128	131	142	1.0	1 150	1 203
	<i>Total chemicals and related products, n.e.s.</i>	1 487	1 564	1 638	11.3	13 025	13 814
6	Manufactured goods classified chiefly by material(b)						
61	Leather, leather manufactures, and dressed furskins, n.e.s.	11	12	15	0.1	121	111
62	Rubber manufactures, n.e.s.(b)	151	148	191	1.3	1 399	1 452
63	Cork and wood manufactures (excl. furniture)	59	58	62	0.4	505	455
64	Paper, paperboard, and articles of paper pulp, of paper or of paperboard(b)	219	189	221	1.5	1 947	1 972
65	Textile yarn, fabrics, made-up articles n.e.s. and related products	198	178	192	1.3	1 863	1 762
66	Non-metallic mineral manufactures, n.e.s.	164	163	197	1.4	1 618	1 639
67	Iron and steel(b)	246	259	276	1.9	2 297	2 504
68	Non-ferrous metals(b)	98	97	102	0.7	764	883
69	Manufactures of metals, n.e.s.(b)	314	276	300	2.1	2 801	3 024
	<i>Total manufactured goods classified chiefly by material</i>	1 460	1 381	1 556	10.7	13 315	13 800
7	Machinery and transport equipment(b)						
71	Power generating machinery and equipment	250	248	313	2.2	2 566	2 515
72	Machinery specialised for particular industries	554	466	582	4.0	4 395	4 840
73	Metal working machinery	66	62	68	0.5	519	709
74	General industrial machinery and equipment, n.e.s. and machine parts, n.e.s.	689	646	706	4.9	6 266	6 492
75	Office machines and automatic data processing machines	672	607	834	5.8	6 122	6 432
76	Telecommunications and sound recording and reproducing apparatus and equipment	715	668	818	5.7	6 541	7 163
77	Electrical machinery, apparatus, appliances, parts (incl. non-electrical counterparts of electrical domestic equipment)(b)	616	581	703	4.9	5 837	5 977
78	Road vehicles (incl. air-cushion vehicles)	1 366	1 460	1 782	12.3	14 223	14 908
79	Transport equipment (excl. road vehicles)	640	314	477	3.3	3 413	4 393
	<i>Total machinery and transport equipment</i>	5 569	5 052	6 283	43.4	49 882	53 429

— nil or rounded to zero (including null cells)

(a) Per cent of total merchandise imports is calculated for the most recent month.

(b) Excludes imports commodities subject to a confidentiality restriction. These are included in Division 98.

				Per cent of total merchandise imports(a)	9 MONTHS ENDED MARCH		
	Jan	Feb	Mar			
	2006	2006	2006		2005	2006	
	\$m	\$m	\$m	%	\$m	\$m	
SECTION AND DIVISION OF THE SITC							
8	Miscellaneous manufactured articles(b)						
81	Prefabricated buildings; sanitary, plumbing, heating and lighting fixtures and fittings, n.e.s.	43	38	42	0.3	394	399
82	Furniture, parts thereof; bedding, mattresses, mattress supports, cushions and similar stuffed furnishings	157	138	147	1.0	1 478	1 586
83	Travel goods, handbags and similar containers	48	41	43	0.3	439	463
84	Articles of apparel and clothing accessories	431	356	360	2.5	2 995	3 278
85	Footwear	110	102	100	0.7	834	878
87	Professional, scientific and controlling instruments and apparatus, n.e.s.	286	284	341	2.4	2 670	2 824
88	Photographic apparatus, equipment and supplies and optical goods, n.e.s.; watches and clocks(b)	103	89	103	0.7	1 047	1 016
89	Miscellaneous manufactured articles, n.e.s.	562	559	635	4.4	5 836	6 390
	<i>Total miscellaneous manufactured articles</i>	<i>1 739</i>	<i>1 608</i>	<i>1 770</i>	<i>12.2</i>	<i>15 693</i>	<i>16 833</i>
9	Commodities and transactions not classified elsewhere in the SITC(c)						
93	Special transactions and commodities not classified according to kind	5	3	3	—	25	26
95	Gold coin whether or not legal tender, and other coin being legal tender	—	—	—	—	5	3
96	Coin (excl. gold coin), not being legal tender	—	—	—	—	18	1
97	Gold, non-monetary (excl. gold ores and concentrates)	528	386	445	3.1	1 724	2 858
98	Combined confidential items excl. some of SITC 280 (exports only) and some of SITCs 510 and 520 (imports only)(c)	10	14	9	0.1	148	92
	<i>Total commodities and transactions not classified elsewhere in the SITC</i>	<i>543</i>	<i>403</i>	<i>457</i>	<i>3.2</i>	<i>1 921</i>	<i>2 978</i>
	Total merchandise imports	13 364	12 688	14 479	100.0	111 262	123 114
	Balance of Payments Adjustment	222	119	156	..	859	1 771
	Goods Debits (imports) on a Balance of Payments Basis	13 586	12 807	14 635	..	112 121	124 885

.. not applicable

— nil or rounded to zero (including null cells)

(a) Per cent of total merchandise imports is calculated for the most recent month.

(b) Excludes imports commodities subject to a confidentiality restriction. These are included in Division 98.

(c) Includes imports commodities subject to a confidentiality restriction.

	EXPORTS				IMPORTS				BALANCE OF MERCHANDISE TRADE	
	2004-05	March	9 months ended March	9 months ended March	2004-05	March	9 months ended March	9 months ended March	2004-05	9 months ended March
		2006	2005	2006		2006	2005	2006		2006
\$m	\$m	\$m	\$m	\$m	\$m	\$m	\$m	\$m	\$m	
Belgium	882	67	615	730	1 179	133	842	1 118	-297	-388
Brazil	635	79	413	713	643	51	456	587	-8	126
Canada	1 880	174	1 442	1 263	1 905	218	1 434	1 446	-25	-183
China	13 003	1 447	8 885	13 003	19 812	1 891	14 988	17 468	-6 809	-4 465
Denmark	170	18	122	144	1 044	86	784	661	-874	-518
Egypt(b)	286	105	211	445	14	1	11	12	272	433
Fiji	394	61	301	356	211	15	167	143	183	213
Finland	571	71	431	495	815	73	604	614	-244	-119
France	1 012	173	725	927	4 437	488	3 513	4 220	-3 425	-3 293
Germany	1 315	135	1 000	1 089	8 646	773	6 417	6 434	-7 331	-5 344
Hong Kong (Sar of China)	2 709	298	1 995	2 100	1 210	116	926	1 191	1 499	909
India	6 055	635	4 038	5 307	1 220	109	932	925	4 836	4 383
Indonesia	3 407	287	2 530	2 883	3 311	291	2 642	3 105	95	-223
Iran	171	74	114	196	24	3	17	28	147	168
Iraq	383	1	381	169	6	—	6	—	377	169
Ireland	179	14	146	121	1 917	159	1 425	1 440	-1 738	-1 319
Israel	173	10	118	112	584	52	437	438	-411	-326
Italy	1 544	160	1 125	1 141	4 494	317	3 457	3 137	-2 951	-1 997
Japan	24 955	2 262	17 648	22 554	17 161	1 473	12 844	12 694	7 794	9 860
Korea, Republic of	9 720	1 054	6 936	8 779	5 006	507	3 721	4 358	4 714	4 421
Kuwait	462	51	348	382	160	9	97	174	302	208
Malaysia	2 581	209	1 939	1 800	5 920	683	4 343	4 993	-3 339	-3 193
Mexico	687	76	521	631	776	86	564	676	-89	-45
Netherlands	1 794	265	1 253	1 861	1 261	103	964	996	534	865
New Zealand	9 163	736	6 948	6 650	5 337	532	3 990	4 156	3 825	2 494
Pakistan	587	12	429	244	146	13	114	108	441	136
Papua New Guinea	1 196	157	828	1 004	1 737	301	1 225	1 836	-540	-832
Philippines	869	82	681	671	699	40	517	578	169	94
Saudi Arabia	1 808	267	1 331	1 628	1 406	98	875	960	402	668
Singapore	3 362	308	2 444	3 200	7 245	875	4 985	7 285	-3 883	-4 085
South Africa	1 652	232	1 171	1 683	1 330	151	925	1 191	323	491
Spain	914	70	549	630	1 327	97	1 015	962	-413	-332
Sweden	280	28	174	332	1 963	236	1 418	1 736	-1 683	-1 403
Switzerland	222	18	181	201	1 481	119	1 104	1 151	-1 259	-949
Taiwan	4 886	579	3 440	4 296	3 612	292	2 732	2 770	1 273	1 526
Thailand	3 900	441	2 946	2 952	4 202	450	3 025	3 916	-302	-965
Turkey	279	37	226	299	365	24	278	254	-85	45
United Arab Emirates	1 274	174	978	1 102	820	44	737	416	454	686
United Kingdom	4 821	590	3 773	5 078	5 935	443	4 385	4 558	-1 114	520
United States of America	9 462	894	6 907	7 017	21 270	2 127	15 787	16 811	-11 809	-9 794
Viet Nam	708	55	518	489	3 096	407	2 359	2 918	-2 388	-2 429
Other Countries(c)	6 472	645	4 761	5 766	5 744	593	4 198	4 651	728	1 116
Total	126 823	13 052	91 524	110 445	149 469	14 479	111 262	123 114	-22 646	-12 669
APEC	93 027	9 129	66 966	79 844	103 716	10 457	77 236	87 534	-10 689	-7 690
ASEAN	14 967	1 393	11 166	12 086	25 152	2 820	18 464	23 492	-10 185	-11 407
Developing Countries	62 362	6 715	44 801	55 176	63 746	6 355	47 290	55 791	-1 384	-615
Least Developed Countries	1 487	117	1 146	1 156	223	84	171	290	1 265	865
European Union(d)	13 816	1 626	10 154	12 939	35 086	3 053	26 368	27 390	-21 270	-14 451
OECD	70 182	6 866	50 971	60 281	88 896	8 211	66 461	69 379	-18 714	-9 098

— nil or rounded to zero (including null cells)

(a) See AusStats for details of all countries.

(b) Exports of Alumina to Egypt are excluded from its country total and included in the 'Other Countries' category.

(c) Includes small value exports entries which can not yet be allocated by country.

(d) From July 2004, European Union includes 25 member countries.

	2004-05	March 2006	9 MONTHS ENDED MARCH	
			2005	2006
	\$m	\$m	\$m	\$m
EXPORTS (a)				
New South Wales	23 003	2 450	16 876	19 778
Victoria	18 513	1 798	13 687	13 953
Queensland	26 369	3 132	18 327	25 823
South Australia	7 641	776	5 762	6 475
Western Australia	38 846	3 659	27 810	34 383
Tasmania	2 639	264	1 901	2 054
Northern Territory	2 222	155	1 632	1 794
Australian Capital Territory	—	2	—	9
State not available for publication(b)(c)	479	56	313	500
Re-exports	7 111	761	5 216	5 677
Total exports	126 823	13 052	91 524	110 445

IMPORTS				
New South Wales	60 107	5 712	44 899	48 003
Victoria	45 140	4 052	33 710	36 926
Queensland	21 727	2 162	16 003	18 377
South Australia	5 711	506	4 252	4 657
Western Australia	14 166	1 634	10 273	12 700
Tasmania	600	42	469	381
Northern Territory	1 990	371	1 633	2 065
Australian Capital Territory	28	1	24	4
Total imports	149 469	14 479	111 262	123 114

— nil or rounded to zero (including null cells)

(a) State in which the final stage of production or manufacture occurs.

(b) Includes exports which can not yet be allocated by state. These shipments will be appropriately classified as more details become available.

(c) Exports of Alumina to Bahrain, Egypt and Iceland are excluded from the state totals and included in 'State not available for publication' category.

PERIOD AVERAGE EXCHANGE RATES(a): Per Australian dollar

<i>Period</i>	<i>United States dollar</i>	<i>UK pound sterling</i>	<i>Euro</i>	<i>Japanese yen</i>	<i>Trade-weighted index of value of the \$A(b)</i>
FINANCIAL YEAR					
2002-03	0.5848	0.3685	0.5577	70.01	53.5
2003-04	0.7137	0.4102	0.5981	78.91	61.5
2004-05	0.7529	0.4052	0.5918	80.45	62.7
MONTHS					
2005					
January	0.7647	0.4071	0.5830	78.98	62.7
February	0.7807	0.4139	0.5999	81.92	64.1
March	0.7859	0.4119	0.5948	82.62	64.2
April	0.7724	0.4078	0.5971	82.94	63.8
May	0.7662	0.4125	0.6033	81.68	63.4
June	0.7667	0.4213	0.6300	83.28	64.4
July	0.7524	0.4294	0.6247	84.24	64.0
August	0.7613	0.4244	0.6193	84.25	64.0
September	0.7653	0.4230	0.6244	85.01	64.5
October	0.7539	0.4275	0.6269	86.57	64.3
November	0.7355	0.4236	0.6234	87.04	63.4
December	0.7430	0.4252	0.6265	88.20	63.7
2006					
January	0.7498	0.4248	0.6189	86.55	63.3
February	0.7416	0.4239	0.6203	87.42	62.9
March	0.7277	0.4170	0.6053	85.35	61.8

- (a) These exchange rates and the trade-weighted index are derived using rates provided by the Reserve Bank of Australia in respect of each trading day.
- (b) May 1970=100. The trade-weighted index is reweighted annually on 1 October and on special occasions if required.

EXPLANATORY NOTES

INTRODUCTION

1 This publication presents preliminary estimates of Australia's international trade in goods and services on a balance of payments basis and merchandise import and export statistics on a recorded trade basis.

2 Merchandise trade statistics on a recorded trade basis are compiled from information submitted by exporters and importers or their agents to the Australian Customs Service (ACS). Adjustments for coverage, timing and valuation are made to recorded trade data to convert them to a balance of payments basis. The main source for services data is the quarterly Survey of International Trade in Services.

3 More comprehensive quarterly estimates of Australia's trade in goods and services, together with comprehensive details of Australia's balance of payments are included in the quarterly publication, *Balance of Payments and International Investment Position, Australia* (cat. no. 5302.0). Detailed monthly statistics on merchandise trade are available on AusStats or by subscription to tailored services.

CONCEPTS, SOURCES AND METHODS

4 The conceptual framework used in compiling Australia's merchandise trade statistics can be found in *International Merchandise Trade, Australia: Concepts, Sources and Methods, 2001* (cat. no. 5489.0).

5 The conceptual framework used in compiling Australia's balance of payments statistics is based on the Fifth Edition of the International Monetary Fund's *Balance of Payments Manual* (BPM5,1993). Descriptions of the underlying concepts and structure of the balance of payments and the sources, methods and terms used in compiling the estimates are presented in *Balance of Payments and International Investment Position, Australia: Concepts, Sources and Methods, 1998* (cat. no. 5331.0). To bring merchandise trade statistics on a recorded trade basis to a balance of payments basis, timing adjustments are made to ensure that the transaction is recorded in the period in which ownership changed, rather than in the period in which the transaction was recorded by ACS. Adjustments are also made to imports to take account of distortions which arise when significant changes occur in the volume of import entries lodged but not yet processed by ACS in a given month. Chapter 6 of cat. no. 5331.0 provides more detail on the relationship between statistics on international merchandise trade on a recorded trade basis and on a balance of payments basis.

6 Both of the Concepts, Sources and Methods publications are available for free from the ABS web site, see <<http://www.abs.gov.au>> – select *About Statistics* then *Concepts & Classifications*.

SEASONAL ADJUSTMENT

7 Monthly original estimates are volatile, being subject to calendar-related and large irregular influences. Seasonally adjusted estimates are derived by estimating and removing systematic calendar related effects, such as seasonal and trading day influences, from the original series. Trading day effects are removed from the original estimates prior to the seasonal adjustment process. Seasonal adjustment does not aim to remove the irregular or non-seasonal influences which may be present in any particular month. These irregular influences may reflect both random economic events and difficulties of statistical recording. The estimates of international trade in goods and services on a balance of payments basis are seasonally adjusted. The merchandise exports and imports statistics on a recorded trade basis are not.

TREND ESTIMATES

8 The month-to-month movements of the seasonally adjusted estimates may not be reliable indicators of trend behaviour because they include irregular or non-seasonal movements. Trend estimates are derived by applying a 13-term Henderson moving average to the seasonally adjusted series. The use of a 13-term Henderson average can result in revisions to the estimates for the most recent six months as additional observations become available. Revisions can also occur because of changes in the original data and as a result of the annual re-estimation of the seasonal factors.

EXPLANATORY NOTES *continued*

SIGN CONVENTION

9 In keeping with balance of payments conventions, where statistics are on a balance of payments basis, credit entries (exports) are shown without sign and debit items (imports) are shown as negative entries. For statistics on a recorded trade basis, both imports and exports are shown without sign. The calculation of percentage changes on balance of payments debit items are made without regard to sign. References to balance of payments debit items in Key Figures, Key Points, and Analysis and Comments are also made without regard to sign.

COMMODITY BREAKDOWNS OF GOODS

10 For details of the classification used for goods exports on a balance of payments basis (credits), see table 6.6 in *Balance of Payments and International Investment Position, Australia: Concepts, Sources and Methods, 1998* (cat. no. 5331.0).

11 Details of the classification of goods imports on a balance of payments basis (debits) are provided in table 6.7 in cat. no. 5331.0. Most of the commodity groups shown in table 4 for goods debits are available for more detailed subgroups from AusStats.

12 The recorded trade statistics shown in tables 12 and 13 are classified by the Standard International Trade Classification 2 (SITC). The first section of tables 12 and 13 show the most significant commodities (by value) at the SITC 3 digit level.

COMMODITY BREAKDOWNS OF SERVICES

13 The quarterly detailed services data published in table 11 are consistent with the monthly aggregates shown in table 9.

14 Monthly indicators for many of the services components that are only surveyed quarterly are not available. In particular, the Freight and Other transportation components of Total services credits are not available for publication on a monthly basis. The estimates for these items shown in table 9 are therefore derived by dividing the quarterly estimate by three. Where quarterly survey data are not available, freight debits are derived directly from imports data for the reference month as a difference between total merchandise cost, insurance and freight (CIF) and free on board (FOB), adjusted to reflect timing and processing adjustments. For freight credits and other transportation credits and debits, estimates are derived by extrapolating the last month's data by an average of movements for the same month over the three previous years.

TOURISM RELATED SERVICES

15 The tourism related services memorandum items provide timely indicators of the movements in tourism related activities, not an absolute measure of the level of these activities. These series are not compiled on a balance of payments conceptual basis. However, they do provide a reasonable approximation of world tourism related activities.

16 The memorandum items have been derived by re-aggregating relevant components of the international trade in services series of the balance of payments accounts. The tourism related indicator has been derived by combining total travel services (business, education-related and other personal travel), passenger fares, and the air transport component of other transportation services which relates to agency fees and commission receipts.

SERVICES BY STATE AND BY PARTNER COUNTRY

17 Annual services data by state and by partner country are released twice yearly. Calendar year data are released with the March issue of this publication and financial year data are released with the September issue. The data are available from AusStats.

18 Services credits are classified by the state of provision, while services debits are classified by the state of consumption. The state allocations for transportation, travel and communication services are based on a number of indicators including merchandise trade statistics by state, overseas passenger arrivals and departures by state of clearance and data provided by the Department of Education, Science and Training. The allocation for other services (about 25% of all trade in services) is primarily based on the location of the business reporting the information, which serves as a proxy for the state of

EXPLANATORY NOTES *continued*

SERVICES BY STATE AND BY PARTNER COUNTRY *continued*

provision/consumption of that service. The data should be used with care but are considered suitable for analysis over time.

19 A comprehensive explanation of the data sources used and the methodology applied in the compilation of partner country statistics is provided in Chapter 17 of *Balance of Payments and International Investment Position, Australia - Concepts, Sources and Methods* (cat. no. 5331.0). Approximately 8% of total services credits and 6% of total services debits for 2004–05 are either confidential, or unable to be allocated to individual countries.

RELATED PRODUCTS OR SERVICES

20 More detailed balance of payments and recorded merchandise trade data, including forward seasonal factors, are available from AusStats. Very detailed merchandise trade data by commodity, country and state are available by contacting the National Information and Referral Service, as shown on the back of this publication.

21 Users may also wish to refer to the following publications which can be downloaded free of charge from the ABS web site:

- *Balance of Payments and International Investment Position, Australia* (cat. no. 5302.0) – issued quarterly
- *International Merchandise Imports, Australia* (cat. no. 5439.0) – issued monthly
- *International Trade Price Indexes, Australia* (cat. no. 6457.0) – issued quarterly
- *Balance of Payments and International Investment Position, Australia: Concepts, Sources and Methods* (cat. no. 5331.0)
- *Information Paper: Quality of Australian Balance of Payments Statistics* (cat. no. 5342.0)
- *International Merchandise Trade, Australia: Concepts, Sources and Methods* (cat. no. 5489.0)
- *A Guide to Australian Balance of Payments and International Investment Position Statistics* (cat. no. 5362.0.55.001).

CAUTIONARY NOTE

22 The tables in this publication are presented on two bases. Tables 1–11 contain estimates of Australia's international trade in goods and services which have been adjusted for coverage, valuation and timing to a balance of payments basis. Tables 12–15 contain estimates of merchandise exports and imports based on Australian Customs Service records. Paragraph 5 of the Explanatory Notes provides an explanation of the difference between these bases.

ABBREVIATIONS

\$b	billion (thousand million) dollars
\$m	million dollars
ABS	Australian Bureau of Statistics
APEC	Asia Pacific Economic Co-operation
ASEAN	Association of South-East Asian Nations
n.e.s.	not elsewhere specified
n.i.e.	not included elsewhere
OECD	Organisation for Economic Co-operation and Development
SAR	Special Administrative Region
SITC	Standard International Trade Classification

APPENDIX RELATED ARTICLES

<i>Article</i>	<i>Source(a)</i>	<i>Issue</i>
Investment		
Foreign ownership of equity	5302.0	Dec qtr 2005
Kangaroo bonds	5302.0	Sep qtr 2004
Gross external debt	5302.0	Sep qtr 2003
Measuring Australia's foreign currency exposure	5302.0	Dec qtr 2001
Balance of payments		
International comparison of balance of payments statistics	(b) 5363.0	1999–2000
The Sydney Olympic Games Update	5368.0	Jul 2000
The Sydney Olympic Games	5302.0	Sep qtr 1999
Merchandise trade		
New methodology for deriving counts of Australian exporters	5368.0	Feb 2006
Export and Import Invoice Currencies, 2005	5368.0	Jun 2005
Australia's Importers, 2003–04	5368.0	Nov 2004
Australia's Exporters, 2003–04	5368.0	Oct 2004
Australia's Trade with the USA	5368.0	Mar 2004
Trade through Australia's ports	5422.0	Sep qtr 2002
Australia's trade in wine	5422.0	Dec qtr 2001
Australia's export markets, 1991–92 to 2000–01	5422.0	Jun qtr 2001
Major commodities traded by Australia, 1991 to 2000	(b) 5422.0	Dec qtr 2000
Australia's trade in crude petroleum	5422.0	Mar qtr 2000
Australia's merchandise trade with the Republic of Korea	5422.0	Sep qtr 1999
Australia's merchandise trade with Japan	5422.0	Mar qtr 1999
Bilateral merchandise trade statistics reconciliation: Australia and the European Union, 1992 to 1997	5422.0	Sep qtr 1998
Trade in services		
International trade in services by partner country, 2005, preliminary	5368.0	Dec 2005
Changes to International trade in services travel statistics	5368.0	Aug 2005
International trade in education services	5302.0	Sep 2001
Finance		
Impact of 2003–2004 farm season on Australian production	1350.0	Oct 2003
Recent trends in construction and first home buyers finance	5609.0	Mar 2002
Household sector data in the financial accounts	5232.0	Mar qtr 2002
Investment Managers	5655.0	Jun qtr 2000
Venture capital, 1999–2000	5611.0	2000–01
Technical information		
Impact of Customs and ABS changes on import statistics from October 2005	5439.0	Oct 2005
ABS Management of the Impact of the Implementation of the Imports Component of the New Customs System	5439.0	Aug 2005
Changes to country and port classifications	5368.0	May 2003
Implementation of New Customs Systems	5368.0	Aug 2004
The effect of customs changes on export statistics	5422.0	Jun qtr 2002
Harmonized system changes	5422.0	Sep qtr 2001
International trade review: data quality and client queries	5422.0	Jun qtr 2000
Data confidentiality	5422.0	Dec qtr 1999

(a) In the ABS web site home page, select Key Products; Papers & Articles; ABS Articles; Feature Articles by Catalogue Number.

(b) This article can be found in pdf format by referring to the Details page of the specified issue of this publication on the ABS web site and click on Download Now.

FOR MORE INFORMATION . . .

INTERNET **www.abs.gov.au** the ABS web site is the best place for data from our publications and information about the ABS.

LIBRARY A range of ABS publications are available from public and tertiary libraries Australia wide. Contact your nearest library to determine whether it has the ABS statistics you require, or visit our web site for a list of libraries.

INFORMATION AND REFERRAL SERVICE

Our consultants can help you access the full range of information published by the ABS that is available free of charge from our web site, or purchase a hard copy publication. Information tailored to your needs can also be requested as a 'user pays' service. Specialists are on hand to help you with analytical or methodological advice.

PHONE 1300 135 070
EMAIL client.services@abs.gov.au
FAX 1300 135 211
POST Client Services, ABS, GPO Box 796, Sydney NSW 2001

FREE ACCESS TO STATISTICS

All ABS statistics can be downloaded free of charge from the ABS web site.

WEB ADDRESS www.abs.gov.au



2536800003067

ISSN 1328 2778

RRP \$26.00